

Part number



C7P 06 L



Brief description:

surface mounting housings with single lever, size "44.27", Pg16, metal version, IP66/ IP67

Product description	
Version	C7 - CV and M7 - MV enclosures, V-Type lever version
Series	Surface mounting housings with 1 lever
Product type	with stainless steel lever
Family	C7 - CV and M7 - MV enclosures, V-Type lever version
Size	size "44.27"
Technical data	
Operating temperature range (min, max)	-40 °C...+125 °C
Material	metal
IP degree of protection	IP66/ IP67 (EN 60529) and IP69K (DIN 40050 - 9) degree of protection.
Cable entry	Pg16
Further technical details	
Weight	197,00 g

Approvals / Standards	
Quality mark	 (type:4/4X/12),  , EAC
Conformity	CQC, CE
General ordering information	
EAN13 code	8015747093538
Tariff number	85369095
Packaging Information	
Packaging length	285,00 mm
Packaging height	170,00 mm
Packaging width	190,00 mm
Packaging weight	2,00 kg
Packaging volume	9,21 dm ³
Packaging description	Carton box
Packaging quantity	10 Pcs
Packaging EAN code	8015747249362
Sub-packaging weight	1,00 kg
Sub-packaging description	Plastic packaging
Sub-packaging quantity	5 Pcs
Sub-packaging EAN barcode	8015747178181

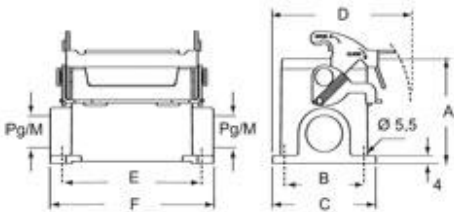
Part number

C7P 06 L



Catalogue drawings

C7P L - C7AP L M7P L - M7AP L



	A	B	C	D	E	F
C7P/M7P 06 L	53	40	52	70	70	82
C7AP/M7AP 06 L	73	45	57	72,5	70	82

Notes

C7P/M7P:

Due to the vertical closing movement, the new lever offers an IP66/IP67 protection (according to EN 60529) when fitted with a complete and coupled connector and used with ILME standard hoods in die cast aluminum with pegs (without adaptor).