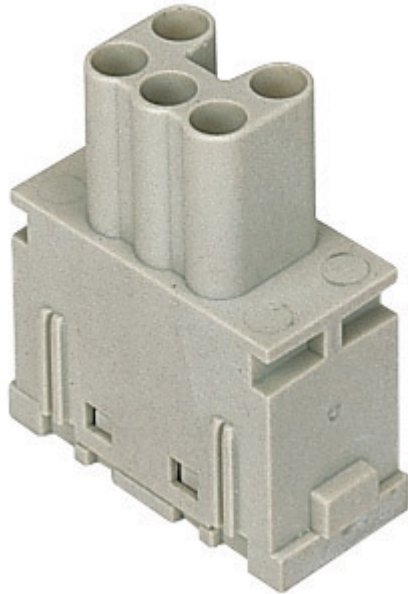


Part number

CX 05 SF



Brief description:

female insert, 5 poles, spring terminal connections , 16A, 400V, 6kV, 3, silver plated, 1 module, modular units series MIXO

Product description

Model	female insert
Version	spring connection
Product type	with female contacts
Family	MIXO series, customizable inserts
Size	1 module
N. of poles	5 poles

Technical data

Current	16 A (A.C. and D.C.)
Voltage	400 V
Rated impulse withstand voltage	6kV
Pollution degree	3
Wire cross-section	0,14 mm ² - 2,50 mm ²
AWG size	26 - 14
Operating temperature range (min, max)	-40°C ... +125°C
Contact type	silver plated
IP degree of protection	IP20 without enclosure, IP65/IP66/IP68/IP69 with enclosure

Further technical details

Characteristics according to EN 61984	16A 400V 6kV 3; 16A 500V 6kV 2
Insulation resistance	≥ 10 GΩ
Rated voltage according to UL/CSA	600V
UL 94 flammability rating	V-0
Weight	17,00 g

Approvals / Standards

Reference standard	EN 61984:2009-06
Quality mark	 , EAC
Conformity	CQC, CE

General ordering information

EAN13 code	8015747096041
Tariff number	85369095

Packaging Information

Packaging length	180,00 mm
Packaging height	130,00 mm
Packaging width	150,00 mm
Packaging weight	1,24 kg
Packaging volume	3,51 dm ³
Packaging description	Carton box
Packaging quantity	60 Pcs
Packaging EAN code	8015747221221
Sub-packaging length	35,00 mm
Sub-packaging height	40,00 mm
Sub-packaging width	155,00 mm
Sub-packaging weight	0,21 kg
Sub-packaging volume	0,22 dm ³
Sub-packaging description	Carton tray
Sub-packaging quantity	10 Pcs
Sub-packaging EAN barcode	8015747096058

Part number

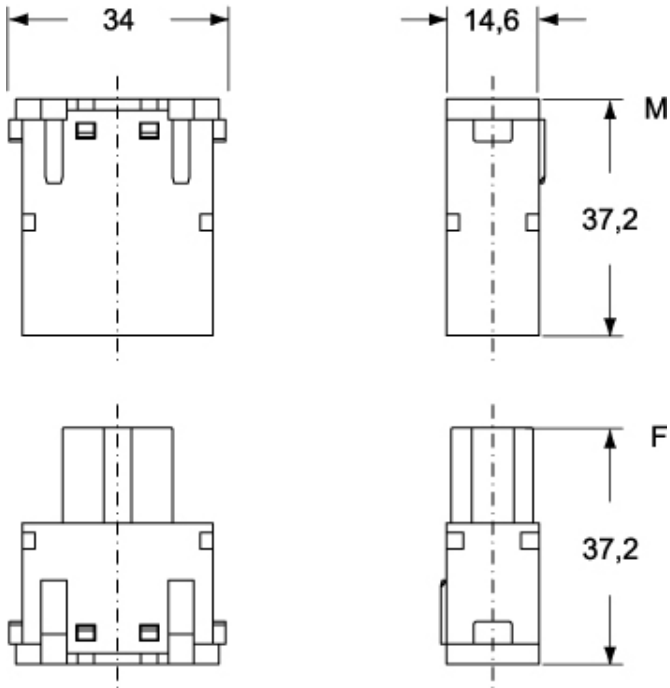
CX 05 SF



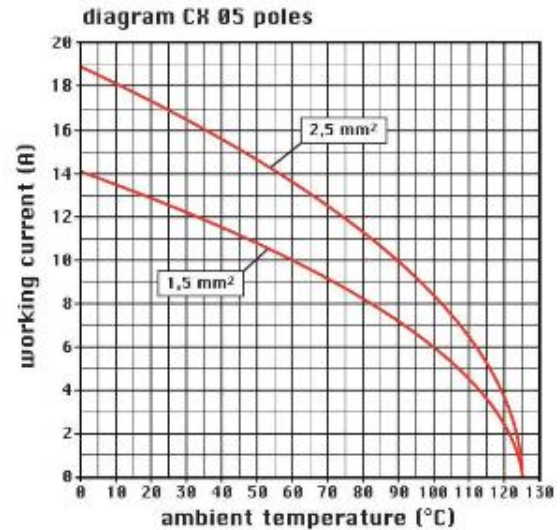
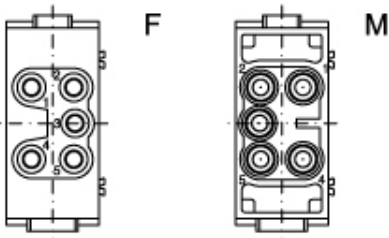
Catalogue drawings

Catalogue drawings

CX 05 SM



CX 05 SF



Notes

Inserts CX 05 S:

- characteristics according to EN 61984:
(16A 400V 6kV 3)
(16A 500V 6kV 2)
- for maximum current load, see the insert load curve section
- inserts for section conductors: 0.14 - 2.5 mm² - AWG 26 - 14
- stripping length see section feature of inserts
- footprint 1 module

the modular inserts must be installed in suitable frames which in turn are installed in traditional housings or COB panel support